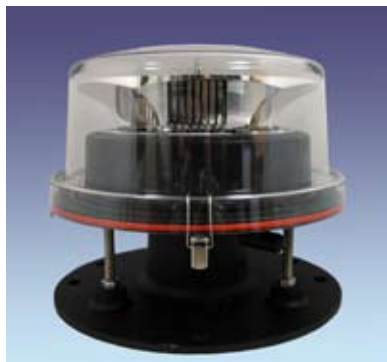


LED RED BEACON - Medium Intensity (L-864)

Certified to: FAA AC 150/5345-43F
 Canadian Aviation Regulation
 CAR 621.19 (Transport Canada)

Compliant to: ICAO
 (Annex 14 - Fourth Edition, July 2004)



APPLICATION

The D264 Series LED based medium intensity red beacon utilizes state-of-the-art optical design to achieve the most compact, efficient, FAA compliant L864 device in the market. While it readily interfaces into existing installations, its robust, low power design will provide years of maintenance-free service.

FEATURES / BENEFITS

- 5 year performance warranty
- Designed to replace 300mm incandescent obstruction lighting fixtures with state-of-the-art high-flux LED technology
- Modular design for simple replacement of light engine
- Can be flashed or steady burned (*order controller or flasher separately*)
- Uses 96% less energy than an incandescent
- Weighs approximately 27 lbs
- Meets or exceeds industry EMI / RFI standards
- Lasts an estimated 10-12 years under normal operation
- Beacon designed to mount onto existing bolt pattern installations
- Resistant to shock and vibration
- Most focused beam spread in the industry - reduced light pollution
- IP66 / NEMA 4X rated

OPERATING CONDITIONS

The beacon is designed to withstand the dynamic conditions experienced in the most severe environments around the world. Temperatures ranging from -67° to +131° F (-40° to +55° Celsius), direct sunlight, wind-blown rain, wind in excess of 150 mph, high humidity, salt fog.

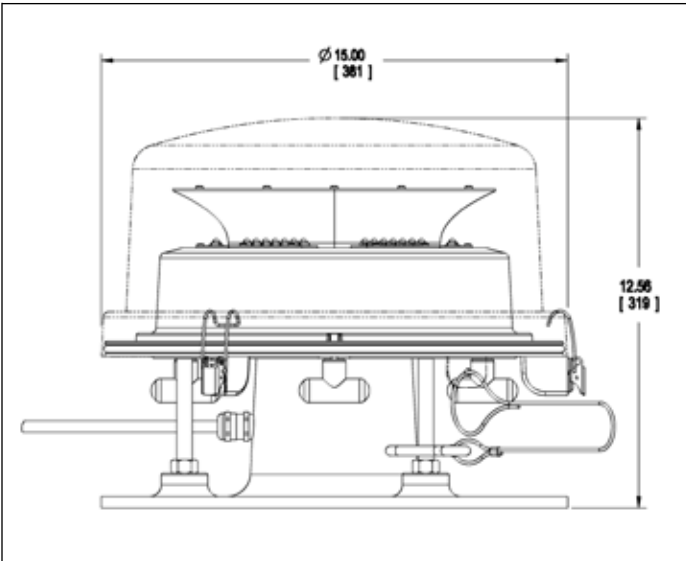
MATERIALS / FINISH

The beacon is designed for durability with a cast aluminum base and stainless steel hardware. The dome is made of UV resistant acrylic and sealed to ensure maximum life of the product.

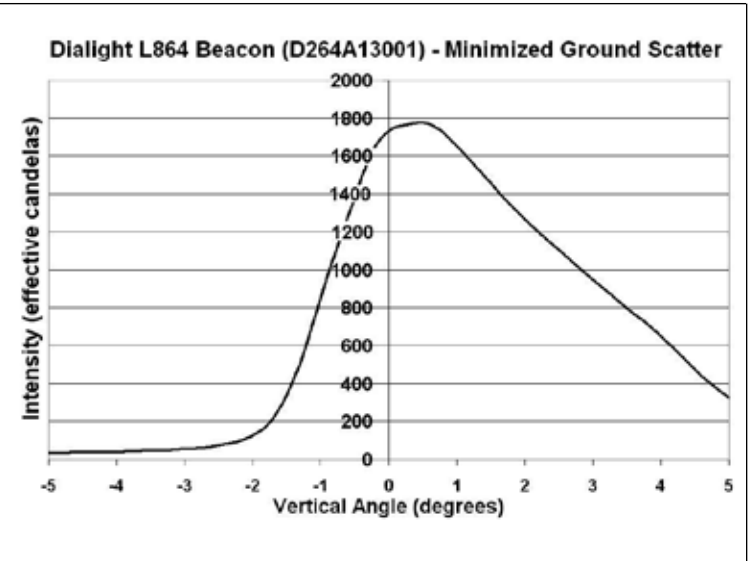
ORDERING INFORMATION

PART NUMBER	DESCRIPTION	VOLTAGE
D264-A13-001	Beacon, Red	120/240 VAC
D264-1011	Replacement Module	120/240 VAC
D264-A14-001	Beacon, Red	48 VDC
D264-1013	Replacement Module	48 VDC
D264-E13-001 (German)	Beacon, Red	120/240 VAC
D264-A13-001EU (ICAO)	Beacon, Red	120/240 VAC
D264-2005	Outer Cover	--

MECHANICAL DIMENSIONS



PHOTOMETRIC DATA



WEIGHTS & MEASUREMENTS

PART NUMBER	SHIPPING WEIGHT	CONTAINER DIMENSIONS
D2 Series	32 lbs (14.50 kg)	24" x 24" x 24" (600 x 600 x 600mm)

ELECTRICAL SPECIFICATIONS

	OPERATING VOLTAGE			CURRENT (AMPS)		VOLT AMPS (VA)			WATTS
	MIN	TYP	MAX	MIN	MAX	MIN	TYP	MAX	TYP
120/240 VAC Units	85	120/240	265	0.2	0.8	40	48	70	48

