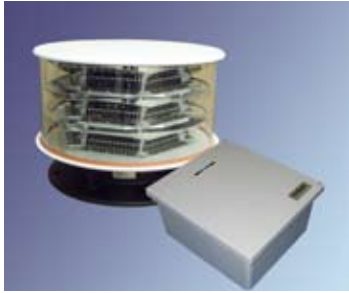


# MEDIUM INTENSITY DUAL LIGHTING SYSTEM

## LED (FAA TYPE L864/L865)



UNIMAR/DIALIGHT LED DUAL LIGHTING SYSTEM

**Certified to:**

**FAA AC 150/5345-43F**

**Compliant to:**

**ICAO Annex 25 November 2004**



### FEATURES

- LED Technology for Exceptionally **Long Life**
- Extremely **Low Maintenance**
  - Best ROI in the market
- Dual-mode beacon provides 10-plus years of lamp life
- Medium Intensity RED Output for Nighttime, FAA Type L864
- Medium Intensity White Output for Daytime, FAA Type L865
- Creates no EMI / RFI
- Precision optics to reduce light pollution
- Complete System Certified to FAA Advisory Circular AC 150/5345-43E
- **5 Year Warranty**

### APPLICATION

The Unimar LED based Medium Intensity Dual Lighting System is designed to provide aviation obstruction lighting for structures up to 500' in height. This complete LED system is the only ETL certified system which exceeds FAA specifications.

Use of the DLS(X)-007 system provides 24 hours of aviation obstruction lighting protection and eliminates the need for costly painting of the structure. This high tech alternative to Xenon strobe and incandescent products will dramatically reduce your operating and maintenance costs. What sets the DLS(X)-007 system apart from the competition is the rugged and high quality design of a totally solid state system. This ensures quality and long service life and the best warranty in this market.

### SYSTEM COMPONENTS

- **DIALIGHT DUAL LED FLASHHEAD(S) - (3 TIER P/N: D1RW-C13-007)**
- **UNIMAR CONTROLLER/POWER SUPPLY(S)** The Controller offers a simple modular design. The Power Supply provides the individual power supplies that provide power to each LED level and timing module. LED indicators are provided to indicate system status. The System Controller provides the monitoring of the correct operation of the Dual Flash Head Components and loss of power. It also provides the proper flash function of the system and any synchronization that is needed to support multiple flashheads.
- **PHOTO-CONTROL (PURCHASED SEPARATELY)** The Photo-Control provides the day / night function control so that the system operates at the correct light output per FAA specifications.
- **POWER AND COMMUNICATIONS CABLE (PURCHASED SEPARATELY) P/N: 9802-010**

### SYSTEM SPECIFICATIONS

**SUPPLY VOLTAGE:** 120 VAC or 240 VAC

**POWER CONSUMPTION (PER FLASHHEAD):**

100 Watts Daytime (40 FPM)

35 Watts Nighttime (30 FPM)

**LIGHT SOURCE:** LED's (7 - 10 year Life Expectancy)

**EFFECTIVE INTENSITY:**

20,000 Candelas White  $\pm$  25% in Daytime Mode

2,000 Candelas Red  $\pm$  25% in Nighttime Mode

**OPERATING TEMPERATURE:** -40°C to +55°C

**LIGHTNING PROTECTION:**

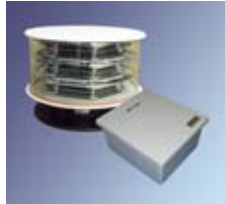
6 kV 3000 Amps Combination Wave

**SYNCHRONIZATION:**

Synchronization Provided by System Controller

**CONTROLLER:** Modular solid-state design - simplified design to troubleshoot or support in the field by user

**SYSTEM ORDERING INFORMATION**



SYSTEM P/N:	HEIGHT	VAC
DLSI-007	(UP TO 350')	120 VAC
DLS2-007	(UP TO 350')	230 VAC
9802-010	FLASHHEAD CABLE	SOLD PER FT

**ASSOCIATED HARDWARE (PURCHASED SEPARATELY)**



**860 SERIES - RUGGED - WITH PROVEN RELIABILITY**

860-IR01-001	120 VAC	7.4 LBS.	46.5 VA
860-IR02-001	240 VAC	7.4 LBS.	70 VA

\* DC option is also available.



**RTO SERIES - NEW - LOW COST**

RTO-IR07-001	(FAA)	2 LBS.	6.8 VA
RTO-6R07-001	(TRANSPORT CANADA)	2 LBS.	9 VA
RTO-IR07-004	RETROFIT *		6.8 VA

\* Attaches to almost any Incandescent Fixture.



**PHOTO-CONTROLS**

18001-006	120 VAC
18002-006	240 VAC

**ADDITIONAL FEATURES AND BENEFITS**

NO MORE DANGEROUS HIGH VOLTAGE POWER SUPPLIES REQUIRED	<ul style="list-style-type: none"> <li>-ENABLES THE USE OF LOW VOLTAGE FLEXIBLE CABLE</li> <li>-ELIMINATES THE NEED TO SEND HIGH VOLTAGE UP A TOWER</li> <li>-PROVIDES CONSIDERABLE SAFETY ADVANTAGES</li> <li>-USES STANDARD LOW VOLTAGE SUPPLY</li> <li>-ELIMINATES CORROSION DUE TO OZONE EFFECTS</li> </ul>
VERY PRECISE OPTICS (PATENT PENDING)	<ul style="list-style-type: none"> <li>-MINIMUM GROUND SCATTER LIGHT</li> <li>-COMMUNITY FRIENDLY LIGHTING SYSTEM</li> </ul>
NO POWER SUPPLY COMPONENTS IN FLASHHEAD	<ul style="list-style-type: none"> <li>-ELIMINATES RF INTERFERENCE WITH CELL NETWORKS ASSOCIATED WITH XENON TECHNOLOGY</li> </ul>